

# MENU OF QUALITY SERVICES 2025-2026

## WE ARE EAGER TO HELP PROGRAMS KEEP IMPROVING.

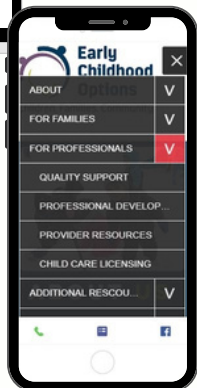
Like you, Early Childhood Options is committed to excellence. We are eager to keep elements of quality in the forefront of our interactions with Right Start and Summit PreK partners. Emotional Support, Classroom Organization, and Instructional Support are the pathways to ensuring that all children learn. We promise to invest in educators because you are preparing our youngest learners for success in kindergarten and beyond. This year's menu is designed to ensure Quality Services to fit for all our partners needs in the four focus areas of:

- HEALTH AND SAFETY SUPPORTS
- ADMINISTRATOR SUPPORTS
- SUPPORTING THE SOCIAL EMOTIONAL NEEDS OF CHILDREN
- CLASSROOM SUPPORTS

We are excited about our focus and commitment to offer professional development growth. We hope you will take advantage of this year's workshops, Edvantage and Think Tank Sessions!

Wishing you well,

Catherine Schaaf  
Executive Director  
Early Childhood Options



## WHERE DO I REGISTER?

Apply on your phone or computer!

1. Registration opens August 30th
2. Visit [earlychildhoodoptions.org](https://earlychildhoodoptions.org) or use the QR Code
3. Click on Professional Development under FOR PROFESSIONALS **OR** in the menu on the mobile site
4. Click the **ENROLL HERE** button at the bottom of the page.
5. Questions?


Call: 970.406.3074

Email: [kim@earlychildhoodoptions.org](mailto:kim@earlychildhoodoptions.org)

**6. SEE TEACHER PROMISE PAGES FOR  
TEACHER PROMISE REGISTRATION.**



 **Teacher Supports**  
Pgs 2-4

 **Administrative  
Opportunities**  
Pg 5

 **Edvantage  
Opportunities**  
Pgs 6-9

 **Level Up Workshops**  
Pgs 10-15

 **Think Tank**  
Pg 16-17

 **Training Calendar**  
Pg 18-20

 **Contact**  
Pg 21

## Early Childhood Options

330 Fiedler Ave

PO BOX 3355

Dillon, CO 80435

[earlychildhoodoptions.org](https://earlychildhoodoptions.org)



# TEACHER SUPPORTS

## Teacher Promise Stipend

**Eligibility:** Current staff (excluding Directors) at RS/SPK Sites (COSHINES RATED L2 and Above)

**Enrollment:** This is a voluntary program. Enrollment is on a quarterly bases. See chart below for dates to register.

Enrollment Opens	Enrollment Closes
September 1	September 30
January 1	January 30
March 1	March 30
June 1	June 30



**Use this QR Code to register for Teacher Promise**

**Stipend:** \$800 Summit School District Teachers

\$1000 for Assistant Teachers and Aides

\$1500 for Lead Teachers\*, Administrative Staff (excluding directors), and Family Care Providers

*To be paid after completion of one full year after enrollment quarter (no partial payments will be made)*

**\*Please refer to the Lead Teacher page following Teacher Supports. Lead Teachers must qualify through one of the nine Early Childhood Teacher pathways.**

As part of the Promise Stipend, applicant must acknowledge that Early Childhood Options will send a 1099-MISC at the end of the year if more than \$600 is paid to the individual, and it is the individual's responsibility to claim this as income on taxes. Prior to receiving payment, a W9 *must* be filled out and filed via *Survey Monkey* from the link provided.

Right Start/Summit Pre-Kindergarten (RS/SPK) recognizes the important role our applicants play in ensuring children receive a high-quality early childhood education. Teachers who register "**Promise**" to:

### Values Promise:

- Be committed to improving cultural relevancy in teaching to ensure equitable outcomes for our children.
- Be committed to improving social emotional practices in the classroom (through things like: Conscious Discipline, Pyramid) to ensure all children have a healthy place to grow and learn.
- Be committed to improving implementation of curriculum so all children have high quality learning experiences.

*Accountability Process: MOU/Application submitted by the applicant at the beginning of the year as part of enrollment*

### Employment Promise- Continuity of Care for the Child:

- Teach every day in the same RS/SPK site.
- Be committed to improving social emotional practices in the classroom (through things like: Conscious Discipline, Pyramid) to ensure all children have a healthy place to grow and learn.
- Be committed to improving implementation of curriculum so all children have high quality learning experiences.

*Accountability Process: MOU/Application submitted by the applicant at the beginning of the year as part of enrollment*



# Teacher Promise Stipend Continued

## Attendance Promise:

- Must maintain a yearly average of 30 hours a week.
- We ask that you maintain mindfulness about the importance of regular attendance for the benefit of children who do best with consistency.

*Accountability Process: MOU/Application submitted by the applicant at the beginning of the year as part of enrollment*

## Professional Development Promise:

- Attend at least one Think Tank, Edvantage Training Session or attend two or more Level Up Workshops. or
- Complete at least 3 credits of higher education ECE related course(s) for example, ECE 1011 (NOT Spanish Classes or Accounting Classes)
- Complete a Child Development Associate (CDA) Credential
- Meet all assignments and coaching requirements from the Think Tank, Edvantage Trainings or Level Up Workshops.

*Accountability Process: MOU/Application submitted by the applicant at the beginning of the year as part of enrollment*

## Community Based Sites:

- Lead Teacher and Assistant Teacher will administer the TS GOLD Assessment to all SPK children in their classrooms at all three checkpoints (Fall, Winter and Spring). Dates to be provided by Education Coordinator at Early Childhood Options.

## Employer Awareness:

- The applicant's employer will be sent a notice that the teacher has enrolled in the program and that we will need the employer to give us data to confirm that the requirements have been met. Coaches will also be notified.

## Additional Supports:

- Coaching and Professional Development Plans are not requirements of this stipend, however Early Childhood Options does offer additional support for teachers seeking to expand their professional development skill set. Contact Jessee Blumentritt, Alison Earnest, or Laura Cronin for support in these areas.

## LEGAL AGREEMENT:

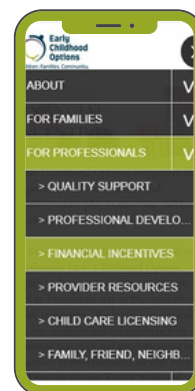
- By joining this program, you agree that your employer may release information to Early Childhood Options, such as but not limited to: attendance records and employment status by dates. Early Childhood Options will keep this information confidential and it will be used for determining status for the Promise stipend and for research to improve Early Childhood Options in the future.

## WHERE DO I REGISTER FOR TEACHER PROMISE? \*

Apply on your phone or computer!

1. Enrollment is on a quarterly basis. SEE CHART ON PAGE 2 FOR ENROLLMENT DATES.
2. Visit [earlychildhoodoptions.org](http://earlychildhoodoptions.org) or use this QR code
3. Click on FINANCIAL INCENTIVES under FOR PROFESSIONALS **OR** in the menu on the mobile site.
4. Click the **ENROLL HERE** button at the bottom of the page.
5. Questions?  
Call: Kimberly Theller at 970.406.3074  
Email: [kim@earlychildhoodoptions.org](mailto:kim@earlychildhoodoptions.org)

**\*\*THIS IS A DIFFERENT APPLICATION THAN THE TRAININGS APPLICATION. YOU MUST ENSURE YOU ARE FILLING OUT BOTH APPLICATIONS TO QUALIFY! SEE PAGE ONE ON HOW TO ENROLL IN OUR TRAININGS.\*\***



**TEACHER PROMISE**  
**ENROLL NOW!**

**TEACHER PROMISE APPLICATION**

# What defines a Lead Teacher?

Lead Teachers must qualify through one of the following nine Early Childhood Teacher pathways per state of Colorado licensing requirements.

Qualification Pathway	Verification	Experience Letter
<b>7.702.45.A.1.a</b> A Bachelor's, Master's, or Doctorate degree from an accredited college or university with a major area of study in one (1) of the following areas: 1) Child Development; 2) Child Psychology; 3) Early Childhood Education; 4) Early Childhood Special Education; 5) Educational Leadership and Administration; 6) Elementary Education; 7) Family and Human Development; 8) Family Studies; or, 9) Special Education	College Transcripts The Department will accept copies of official transcripts or transcripts printed from the student's account if the information is verifiable.	Fulfilled by a Bachelor's Degree or higher. No additional experience required.
<b>7.702.45.A.1.b</b> A Bachelor's, Master's, or Doctorate degree from an accredited college or university with a major area of study in any area other than those listed at section 7.702.45, a, 1, a, and an additional two (2) three (3)-semester credit hour courses in Early Childhood Education; one (1) of the courses must be either Intro to ECE, Guidance Strategies or the Department approved Pyramid Plus Training.	College Transcripts The Department will accept copies of official transcripts or transcripts printed from the student's account if the information is verifiable. Verifiable copy of Department approved Training	Fulfilled by a Bachelor's Degree or higher. No additional experience required.
<b>7.702.45.A.1.c</b> An Associate's degree (60 semester credit hours) from an accredited college or university in Early Childhood Education or Child Development, which must include at least two (2), three (3)-semester credit hour courses in Early Childhood Education; one (1) of the courses must be either Intro to ECE, Guidance Strategies or the Department approved Pyramid Plus Training.	College Transcripts The Department will accept copies of official transcripts or transcripts printed from the student's account if the information is verifiable. Verifiable copy of Department approved Training	Fulfilled by an Associate's Degree or higher. No additional experience required.
<b>7.702.45.A.1.d</b> A current professional Teaching License issued by the Colorado Department of Education with an endorsement in the area of Elementary Education, Early Childhood Education, Early Childhood Special Education, or Early Childhood Special Education Specialist.	Verifiable copy of CDE Teacher License with the required Endorsements: Early Childhood Education, Early Childhood Special Education, Early Childhood Special Education Specialist, Elementary Education, Principal Licensure or Special Education Teacher License must have a current expiration date	Current Teacher License fulfills the experience requirement based on a previously earned Bachelor's degree or higher verified by CDE.
<b>7.702.45.A.1.e</b> A current Early Childhood Professional Credential Level II (2) or higher in Version 3.0 as determined by the Department	Current copy of Credential Level II (2) (Version 3.0) Level III (3) Version 2.0 will be accepted until Credential expiration date	No additional experience required experience is reviewed by the PDIS Team and points are awarded based on the Credential application evaluation
<b>7.702.45.A.1.f</b> A current Child Development Associate (CDA) awarded by the CDA Council in one of the following: Center-Based, Preschool; Center-Based, Infant-Toddler; or Family Child Care; or other Department-approved credential	Current CDA Certificate issued by the CDA Council	No additional experience required
<b>7.702.45.A.1.g</b> Completion of a course of training approved by the Department and published on the Department's approval list; <ul style="list-style-type: none"> <li>• Montessori Training MACTE Accredited (AMI &amp; AMS)</li> <li>• Delta/Montrose Technical Center</li> <li>• Buell Early Childhood Leadership Institute</li> <li>• Clayton Institute / UCD</li> <li>• Stanley British Primary School / UCD</li> <li>• Emily Griffith</li> <li>• Pickens Tech</li> </ul>	Current CDA Certificate issued by the CDA Council	Nine (9) months (1,365 hours) of verified experience in the care and supervision of four (4) or more children less than eight (8) years of age who are not related to the individual
<b>7.702.45.A.1.h</b> Eighteen (18) semester credit hours from an accredited college or university in Early Childhood Education; one (1) of the courses must be either Intro to ECE, Guidance Strategies or the Department approved Pyramid Plus Training.	College Transcripts The Department will accept copies of official transcripts or transcripts printed from the student's account if the information is verifiable.	Three (3) months (455 hours) of verified experience in the care and supervision of four (4) or more children less than eight (8) years of age who are not related to the individual
<b>7.702.45.A.1.i</b> A current Early Childhood Professional Credential Level I or higher in Version 3.0 as determined by the Department OR completion of two (2) three (3) semester credit hour courses from an accredited college or university in Early Childhood Education; one (1) of the courses must be either Intro to ECE, Guidance Strategies or the Department approved Pyramid Plus Training.	A current Colorado Level I (one) Credential (version 2.0 and 3.0) -OR- Official Transcript	Twenty-one (21) months (3,185 hours) of verified experience in the care and supervision of four (4) or more children less than eight (8) years of age who are not related to the individual. Satisfactory experience includes being a licensee of a Colorado Family Child Care Home, a Teacher's Aide or Teacher in a childcare center, preschool, or elementary school.  The 3,185 hours of verified experience must be additional and not used to earn the Level 1 (one) Credential.  The experience used to obtain the Colorado Level 1 (one) Credential must be attached to the credential. The additional 21 months of experience must be in the staff member's file and available for review.

All International Official Transcripts awarded outside of the United States must be evaluated for United States equivalency. The Department accepts evaluations from organizations approved

The National Association of Credential Evaluation Services (NACES). [www.naces.org/members](http://www.naces.org/members). Unfortunately, international experience is not accepted by the Department.

## Continuing Education

Scholarships are available for all teachers in Right Start/Summit Pre-K classrooms to reach their Professional Development Goals. Visit our website at [www.earlychildhoodoptions.org](http://www.earlychildhoodoptions.org) for additional information.

Colorado Mountain College (CMC) offers opportunities for teachers and administrators to meet the educational requirements for Early Childhood Teacher and Director as defined by the Department of Human Services of the State of Colorado. The Early Childhood Education Program at CMC offers 3 Certificates and 2 Associate Degrees. CMC also offers a BA in Education with ECE and Elementary Education Endorsements and a BAS degree with ECE emphasis. Contact Barb Jackman at 970.968.5820 for more information or visit <https://coloradomtn.edu/campuses/breckenridge-dillon/>.

# ADMINISTRATIVE OPPORTUNITIES

We are here to support all staff, including our administrators. Check out these opportunities designed specifically with administrative tasks in mind!

DM

## Director Meetings

All directors and assistant directors are encouraged to attend. In these quarterly meetings, we will discuss updates common to all centers, new trends from ECO and much more! \*\*Registration is not required for Director Meetings!

**Facilitator:** Alison Earnest

**Dates and Time:** Thursdays, 9/4; 12/4; 3/5; 6/4 from 10:00 -11:30 am

**Location:** Hybrid

ECM

## Education Coordinator Meetings

These sessions are for education coordinators at all sites in Summit County. Every other month, meetings will be held for networking, sharing ideas, discussing how to support teachers with observing and entering GOLD data, and reviewing reports that can be generated from Teaching Strategies. \*Dates and times could be subject to change due to group availability. \* \*\*Registration is not required for these Meetings!

**Who Should Attend:** Educational Coordinators

**Facilitators:** Jessee Blumentritt

**Dates and Time:** Wednesdays 3-4 PM on 9/10, 11/12, 1/14, 3/11, 5/13, 7/8

**Location:** Virtual Zoom Meeting



## LIAISONS

Programs with over 50 children may identify up to three Liaisons; Two SEALs and one CCHL or Two CCHL and one SEAL

Child Health Liaison and SEAL Supplements will be awarded in September. The award time frame will run September to August, applications opening September 1 upon completion of set initiatives for each Liaison.

ALL LIAISONS MUST CONTACT Kim Theller FOR THE WORKSHEET. The goal worksheet requires initiatives, action steps, and evaluation pieces that are outlined.

To receive the Child Health Liaison or Social Emotional Action Leader Right Start Salary Supplement, liaisons must:

- CCHL must complete the *Child Health Liaison Course* and SEAL must complete all 18 Pyramid sessions.
- Submit a copy of the Certificate of Completion along with a completed application on Early Childhood Options online platform. <http://ecor.smapply.org/>
- Work a minimum of 20 hours in a licensed child care center program in Summit County.
- Attend at least two group meetings per year. One on one meetings will occur more often.
- Implement and evaluate ONE annual community initiative.
- Implement and evaluate TWO annual program initiatives.
- Liaisons will commit to working at least 2 hours per month outside of regularly scheduled work hours to fulfill community and program initiatives.
- Fulfill childcare licensing and best practices.
- Inform parents of Health Liaisons and/or Seal initiative (s).

Center Directors must notify Early Childhood Options if a change in Liaison is made. The participant must acknowledge that Early Childhood Options will send a 1099-MISC at the end of the year if more than \$600 is paid to the individual, and it is the individual's responsibility to claim this as income on taxes. Prior to receiving payment, a W9 must be filled out and filed via Survey Monkey from the link provided.

Please call 970-406-3074 with any questions. Email the completed contract to Kimberly Theller - [kim@earlychildhoodoptions.org](mailto:kim@earlychildhoodoptions.org).

# THE EDVANTAGE TRAINING OPPORTUNITIES

The majority of trainings will be virtual zoom sessions. Please turn your cameras on out of respect for our speakers. Participation is an expectation to assure comprehension of the topics and follow up implementation in the classrooms.

## ASQ

### ASQ Training

In this session, participants will be provided an overview, hands on practice scoring and discussing the Ages and Stages Questionnaires® (ASQ®). This tool provides reliable, accurate developmental and social-emotional screening for children between birth and age 6. ASQ has been specifically designed to pinpoint developmental progress and catch delays in young children-paving the way for meaningful next steps in learning, intervention, or monitoring.

**Who Should Attend:** Classroom Teachers/Administrators

**Instructor:** Kathryn Van Iderstine, Public Health Nurse

**Date:** Thursday, October 16th, Thursday, March 5th

**Time:** 6:00 pm - 8:00 pm

**Location:** Virtual Zoom Meeting

**Colorado Approved:** 2 hours/PDIS/CGDL/CDA/Observing & Recording Children's Behavior

**Stipend:** \$50

## STB

### Stop The Bleed

The person next to a bleeding victim may very well be the one who's most likely to save him or her from bleeding to death. By learning how to control bleeding, you'll gain the ability to recognize life-threatening bleeding and act quickly and effectively to control bleeding once you learn three quick techniques. Take the ACS Stop the Bleed training course and become empowered to make a life-or-death difference when a bleeding emergency happens.

**Who Should Attend:** Classroom Teachers/Administrators/Home Providers

**Instructor:** Kathryn Van Iderstine, Public Health Nurse

**Date:** Thursday, May 7th

**Time:** 6:00 pm - 7:00 pm

**Location:** In Person MEDICAL OFFICE BUILDING FRISCO

**Colorado Approved:** 1 hour/PDIS/COA/CDA/Planning a Safe and Healthy Learning Environment

**Stipend:** \$25



# EDVANTAGE TRAININGS CONTINUED

## ELOF

### Early Learning Outcomes Framework

This interactive training provides an overview of the Head Start Early Learning Outcomes Framework (ELOF), focusing on its importance and how it connects to Teaching Strategies GOLD (TS GOLD). Professionals will explore how ELOF guides curriculum planning and child development goals, and how its domains align directly with TS GOLD objectives. Through hands-on activities and discussions, staff will gain a deeper understanding of how to use ELOF to inform observations, support intentional teaching, and ensure individualized learning experiences.

**Who Should Attend:** Classroom Teachers/Administrators/Home Providers

**Instructor:** Jennifer Mehring

**Date:** Wednesday, February 11th

**Time:** 6:00 pm - 8:00 pm

**Location:** Virtual Zoom Meeting

**Colorado Approved:** 2 hours/PDIS/CGDL/CDA/Understanding the Principles of Child Development and Learning

**Stipend:** \$50

## AS

### Active Supervision

Keeping children safe is a top priority for all educators. In this training, we will help you learn and implement the six strategies of active supervision. We will explore systematic approaches that can be utilized to ensure that no child is left unattended. During this time we will also address staff wellness in order to be able to supervise effectively.

**\*\*This training is required annually of ALL Early/Head Start Staff**

**Who Should Attend:** Classroom Teachers, Administrators, Home Providers

**Instructor:** Adriana Salcido

**Dates:** Wednesday, September 24th OR Thursday, March 26th

**Time:** 6:00 pm - 8:00 pm

**Location:** Virtual Zoom Meeting

**Colorado Approved:** 2 hours/PDIS/CGDL/CDA/Planning Safe and Healthy Learning

**Stipend:** \$50



**Recordings/resources  
available upon  
request.**

**\*\*Stipends will not be  
granted for watching a  
video.\*\***

**Register for the  
training sessions  
using the QR Code**



# EDVANTAGE TRAININGS CONTINUED

## CCBTIP

### Care of the Caregiver Based Off Trauma Informed Practices

In this session we will focus on infant/toddler caregiver wellness and well-being. Caregivers will explore how stress and trauma may impact them and how they can safeguard the most important protective factors—themselves. Participants will explore the strategies for building self-reflection and general workforce wellness.

**Who Should Attend:** Preschool Teachers/Home Providers

**Instructor:** Jacqui Black

**Date:** Tuesday, May 19th

**Time:** 6:00 pm - 7:00 pm

**Location:** Virtual Zoom Meeting

**Colorado Approved:** 1 hour/PDIS/PP/CDA/Managing a Commitment to Professionalism

**Stipend:** \$25

## MCSN

### Montessori Based Meeting Your Child's Social/Emotional Needs to Help with Challenging Behavior

**Who Should Attend:** Infant/Toddler Teachers/Home Providers

**Instructor:** Valene Rodriguez

**Date:** Wednesday, April 8th

**Time:** 6:00 pm - 7:00 pm

**Location:** Virtual Zoom Meeting

**Colorado Approved:** 1 hour/PDIS/PP/CDA/To Support social and Emotional Development and Provide Positive Guidance

**Stipend:** \$25

## HFM

### High Five Mathematize

An engaging 2-hour virtual training designed to deepen your understanding of early math concepts and how to naturally integrate them into everyday interactions with young children. High Five Mathematize focuses on building foundational math skills through playful, developmentally appropriate practices aligned with the Head Start Early Learning Outcomes Framework (ELOF). Participants will explore key math concepts, engage in hands-on activities, and leave with practical strategies to support children's mathematical thinking in the classroom and at home.

**Who Should Attend:** Administrators/ Classroom Teachers/Home Providers

**Instructor:** Jennifer Mehring, Early Childhood Specialist from Office of Head Start

**Date:** Wednesday, October 29th

**Time:** 6:00 pm - 8:00 pm

**Location:** Virtual Zoom Meeting

**Colorado Approved:** 2 hours/PDIS/PP/CDA/Understanding the Principles of Child Development and Learning

**Stipend:** \$50

# EDVANTAGE TRAININGS CONTINUED

## ECEPT

### ECE Professionalism Training

Come join us for a training on ECE professionalism to learn about how you can get your staff to reflect on the 8 traits of professionalism. After attending this training you will then have a copy to do this training with your staff to encourage awareness of professionalism in your program!

**Who Should Attend:** Administrators and Lead Teachers

**Instructor:** Dora Esparza, Denver Early Childhood Council

**Date:** Thursday, March 12th

**Time:** 6:00 pm - 7:30 pm

**Location:** Virtual Zoom Meetings

**Colorado Approved:** 1.5 hours/PDIS/PP/CDA/Managing a Commitment to Professionalism

**Stipend:** \$37.50

## DLL

### Dual Language Learners Planned Language Approach

Professionals will learn about the classroom language models and the goals and teaching strategies associated with classroom language models. Participants will develop an intentional plan for when a child's home language will be used to support learning in the classroom, and how to engage children and families in developing their home language and culture both at home and in the classroom. **\*\*This training is required of ALL NEW Early/Head Start Staff.**

**Who Should Attend:** Administrators, Classroom Teachers, Home Providers

**Instructor:** Jennifer Mehring, Early Childhood Specialist from Office of Head Start

**Date:** Wednesday, November 19th

**Time:** 6:00 pm - 7:30 pm

**Location:** Virtual Zoom Meeting

**Colorado Approved:** 1.5 hours/PDIS/PP/CDA/Understanding the Principles of Child Development and Learning

**Stipend:** \$37.50





# LEVEL UP WORKSHOPS

CCE

## Creating Calm Environments in an Early Childhood Setting

This professional development training is designed for early childhood educators seeking to foster calm, nurturing classroom environments that support young children's social and emotional well-being. Participants will explore the powerful connection between a child's surroundings and their ability to self-regulate, build relationships, and develop emotional resilience. Through a combination of evidence-based strategies, reflective practice, and practical tools, this training will guide educators in designing spaces and routines that reduce stress, promote safety, and encourage positive interactions. Topics include the role of sensory experiences, emotional climate, adult-child relationships, and trauma-informed approaches in creating supportive learning environments. Creating a calm environment isn't just about quiet—it's about creating spaces where every child feels safe, seen, and supported. Join me to learn how your classroom can become a foundation for lifelong emotional health.

**Who Should Attend:** Classroom Teachers/Home Providers

**Instructor:** Megan Matza

**Date:** Wednesday, October 22nd

**Time:** 6:00 pm - 7:30 pm

**Location:** Virtual Zoom Meeting

**Colorado Approved:** 1.5 hours/PDIS/CGDL/CDA/To Support Social and Emotional Development and Provide Positive Guidance

**Stipend:** \$37.50

ECC

## Establishing Consistency in the Classroom

This professional development training focuses on the critical role of consistency in early childhood settings and its impact on children's social-emotional development. Predictable routines, clear expectations, and stable relationships are foundational for young children to feel secure, confident, and ready to engage in learning. Participants will examine how consistent environments help children develop trust, autonomy, and emotional regulation. The training will offer practical strategies for creating structure through daily routines, transitions, and adult responses, as well as how to support children through change while maintaining emotional safety. By creating dependable environments, educators can strengthen children's social-emotional foundations and support lifelong skills such as resilience, self-regulation, and relationship-building. Join me as we explore how consistency is not just structure—it's a powerful tool for emotional growth and developmental success.

**Who Should Attend:** Classroom Teachers/Home Providers

**Instructor:** Megan Matza

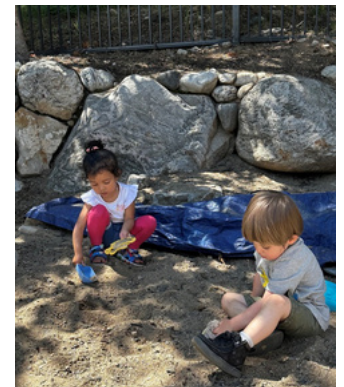
**Date:** Wednesday, March 18th

**Time:** 6:00 pm - 8:00 pm

**Location:** Virtual Zoom Meeting

**Colorado Approved:** 2 hours/PDIS/CGDL/CDA/To Support Social and Emotional Development and Provide Positive Guidance

**Stipend:** \$50



## HSO

### Head Start Orientation/Performance Standards

The Head Start Orientation training is targeting all staff that are new to any of the Head Start community partner sites-Summit School District, Lake Dillon Preschool, Summit County Preschool, Carriage House, and Wildflower Nature School. Staff will be introduced to the Early Head Start and Head Start programs by providing an overview of what Head Start is, who it serves, and how important the teacher's role is in the lives of enrolled children. The Head Start performance standards will be briefly discussed as well as what to expect as a teacher in a Head Start classroom. The Summit County Head Start staff wish to welcome and connect teachers with resources to support achieving early childhood professional goals!

**\*\*This training is required of ALL NEW Early/Head Start Staff.**

**Who Should Attend:** Classroom Teachers who have not had this training and Administrators

**Instructor:** Jackie Lujan

**Dates:** Wednesday, September 17th

**Time:** 6:00 pm - 8:00 pm

**Location:** Virtual Zoom Meeting

**Colorado Approved:** 2 hours/PDIS/PP/CDA/Managing Effective Program Operation

**Stipend:** \$50

## CSRT

### Calming Strategies and Regulation Techniques

In this session participants will explore practical, age-appropriate calming strategies and self-regulation techniques to support young children's emotional development. The session will highlight the importance of attunement and attachment in co-regulation, while introducing breathing exercises and sensory experiences that can help children manage their emotions. Educators will leave with developmentally appropriate tools to support emotional resilience in early learners

**Who Should Attend:** Preschool Classroom Teachers/Home Providers

**Instructor:** Jacqui Black

**Date:** Tuesday, December 2nd

**Time:** 6:00 pm - 7:00 pm

**Location:** Virtual Zoom Meeting

**Colorado Approved:** 1 hour/PDIS/PP/CDA/Managing Effective Program Operation

**Stipend:** \$25



#### LEGAL AGREEMENT:

By joining this program, you agree that your employer may release information to Early Childhood Options, such as but not limited to: attendance records and employment status by dates. Preschool Promise will keep this information confidential and it will be used for determining status for the Teacher stipend and for research to improve Early Childhood Options in the future.



Register at [earlychildhoodoptions.org](https://earlychildhoodoptions.org)



## Difficult Conversations with Families

This training equips early childhood educators with practical tools and strategies for navigating challenging interactions with families while fostering positive, professional relationships. Participants will explore common challenges—such as communication barriers, differing expectations, and high-conflict situations—and learn how to respond with empathy, clarity, and consistency. The session emphasizes collaboration and proactive problem-solving to support strong partnerships between educators and families, even in the most complex circumstances.

**Who Should Attend:** Infant/Toddler Teachers/Home Providers

**Instructor:** Morgan Thompson

**Date:** Thursday, January 15th

**Time:** 6:00 pm - 7:30 pm

**Location:** Virtual Zoom Meeting

**Colorado Approved:** 1.5 hours/PDIS/TP/CDA/To Establish Positive and Productive Relationships with Families

**Stipend:** \$37.50

## Making Learning Visible/Documentation

What and how do we document? How do we choose what moments to document? What questions to ask? These are questions that often arise when considering the role of documentation in the early childhood classroom. 'Making learning visible' is a foundational concept within the Reggio Emilia approach that honors the many ways children express, construct, and communicate knowledge. We will explore how to observe, document, and interpret children's thinking in ways that reveal the richness of their ideas and learning processes. We will discuss strategies for capturing learning through photographs, transcripts, and artifacts, and consider how documentation can serve as a tool for reflection, collaboration, and curriculum development. Through real-world examples and interactive dialogue, educators will examine the role of the environment, the image of the child, and the educator as researcher in making learning visible—not just to teachers and families, but to the children themselves.

**Who Should Attend:** Classroom Teachers/Home Providers

**Instructor:** Alex Morgan, Boulder Journey School

**Date:** Wednesday, January 14th

**Time:** 6:00 pm - 7:30 pm

**Location:** Virtual Zoom Meeting

**Colorado Approved:** 1.5 hours/PDIS/TP/CDA/Advancing Children's Physical and Intellectual Development

**Stipend:** \$37.50

## Outdoor Exploration to Support Children's Learning

In this virtual experience, we explore how outdoor environments can become rich landscapes for inquiry, discovery, and relationship-building. Together, we will examine how nature and outdoor spaces can act as co-teachers, offering endless opportunities for exploration, contextual curriculum, and deep connection to place. Participants will engage with pedagogical documentation, reflect on the role of the adult in supporting outdoor learning, and consider how loose parts, seasonal change, and local context can be used to provoke curiosity and meaning-making. Grounded in the Reggio Emilia philosophy, this session will highlight the value of slowing down, listening closely, and honoring children's rights to experience the natural world as active protagonists in their learning journeys.

**Who Should Attend:** Classroom Teachers/Home Providers

**Facilitator:** Alex Morgan, Boulder Journey School

**Date:** Tuesday, February 17th

**Time:** 6:00 pm - 7:30 pm

**Location:** Virtual Zoom Meeting

**Colorado Approved:** 1.5 hour/PDIS/TP/CDA/Teaching Practices

**Stipend:** \$37.50

### Grace and Courtesy in a Montessori Environment

This session will explore how we can intentionally support toddlers in developing these social habits through modeling, routine, and age-appropriate activities/expectations.

#### Core Focus Areas

- Respect in the Environment
- Social Interactions and Communication
- The Power of Adult Modeling
- Practical Grace and Courtesy Activities

By weaving Grace and Courtesy into everyday life, we give toddlers the tools to become kind, independent, and socially aware members of their classroom community.

**Who Should Attend:** Administrators/Teachers/Home Providers

**Instructor:** Kendyll Murray

**Dates:** Wednesday, November 12th

**Time:** 6:00 pm - 7:30 pm

**Location:** Virtual Zoom Meeting

**Colorado Approved:** 1.5 hours/PDIS/SEHD/CDA/Understanding the Principles of Child Development and Learning

**Stipend:** \$37.50

### Individualized and Developmentally Appropriate Interaction Practices for Preschoolers

This session will focus on individualized and developmentally appropriate interaction practices to support young children's growth and learning. Educators will explore strategies for providing individualized feedback, incorporating children's interests into child-centered activities, and encouraging verbal self-expression through open-ended questions and probing. The training will also highlight ways to nurture creativity by being present in play and providing engaging, varied experiences paced to meet children's developmental needs.

**Who Should Attend:** Preschool Teachers/Home Providers Working with Preschool Children

**Facilitator:** Jacqui Black

**Date:** 6:00 pm - 7:00 pm

**Time:** Tuesday, April 7th

**Location:** Virtual Zoom Meeting

**Colorado Approved:** 1 hour/PDIS/SEHD/CDA/Supporting Children's Physical and Intellectual Development

**Stipend:** \$25



Register For TRAINING  
SESSIONS  
Using  
This QR Code



## WORKSHOPS CONTINUED

FPIT

### Family Partnerships: Relationship Based Care and Practices with Infant and Toddlers

During this training we will discuss the importance of relationships with families as the basis for responsive caregiving of infants and toddlers. Some information from Module 4 of EQIT: our partners the families will also be discussed.

**Who Should Attend:** Infant/Toddler Classroom Teachers/Home Providers working with Infants and Toddlers

**Facilitator:** Jesse Blumentritt

**Date:** Thursday, December 11th

**Time:** 6:00 pm - 7:30 pm

**Location:** Virtual Zoom Meeting

**Colorado Approved:** 1.5 hours/PDIS/SEHD/CDA/Building Productive Relationships with Families

**Stipend:** \$37.50

RRBC

### Responsive/ Relationship Based Caregiving

We will discuss what responsive caregiving for infants and toddlers looks like as well as the benefits for the child, families and caregivers.

**Who Should Attend:** Infant/toddler Classroom Teachers/Home Providers who work with Infants and Toddlers

**Facilitator:** Jesse Blumentritt

**Date:** Thursday, January 29th

**Time:** 6:00 pm - 7:00 pm

**Location:** Virtual Zoom Meeting

**Colorado Approved:** 1 hour/PDIS/TP/CDA/Planning a Safe and Healthy Learning Environment

**Stipend:** \$25

CCFC

### CC Fidelity Checklist for Teachers

Curriculum fidelity refers to how closely a program implements the content and processes of a curriculum as they were designed. This session is an introductory training for teachers, directors, administrators, and education coordinators to determine and measure the fidelity of the curriculum. Key components of the Creative Curriculum will also be briefly discussed during the session, along with the various parts of the fidelity checklist. Attendees will also gain knowledge of how to use data gathered from the fidelity checklist to inform the next step in curriculum implementation in their program.

**Who Should Attend:** Classroom Teachers/Home Providers/Administrators

**Facilitator:** Jackie Lujan and Kim Theller

**Date:** Wednesday, October 15th

**Time:** 6:00 pm - 8:00 pm

**Location:** Virtual Zoom Meeting

**Colorado Approved:** 2 hours/PDIS/TP/CDA/Supporting Children's Physical and Intellectual Development

**Stipend:** \$50

TRCSP

## Trauma-Responsive Care Strategies and Practices (Infants and Toddlers)

In this session participants will be exploring a variety of trauma-responsive caregiving strategies—from building secure and responsive relationships and attachments, to creating trauma-responsive routines, trauma-responsive environments for babies and toddlers and the importance of play. Participants will explore in depth the importance of responsive and nurturing strategies and practices. They will explore how to create trauma-sensitive environments. And they will examine how play and other trauma-responsive practices and strategies can support babies and toddlers.

**Who Should Attend:** Infant/Toddler Teachers/Home Providers

**Facilitator:** Jacqui Black

**Dates:** Tuesday, October 7th

**Time:** 6:00 pm - 7:00 pm

**Location:** Virtual Zoom Meeting

**Colorado Approved:** 1 hour/PDIS/COA/CDA/To Support social and Emotional Development and Provide Positive Guidance

**Stipend:** \$25

ITIRT

## Infant and Toddler Focused Interactions During Routines and Transitions

During this training we will take an in depth look on how to maximize interactions and conversations for infants and toddlers during daily routines and transitions. Information from the toddler CLASS tool as well as resources from EQIT will be shared.

**Who Should Attend:** Infant/Toddler Classroom Teachers/Home Providers

**Instructor:** Jessee Blumentritt

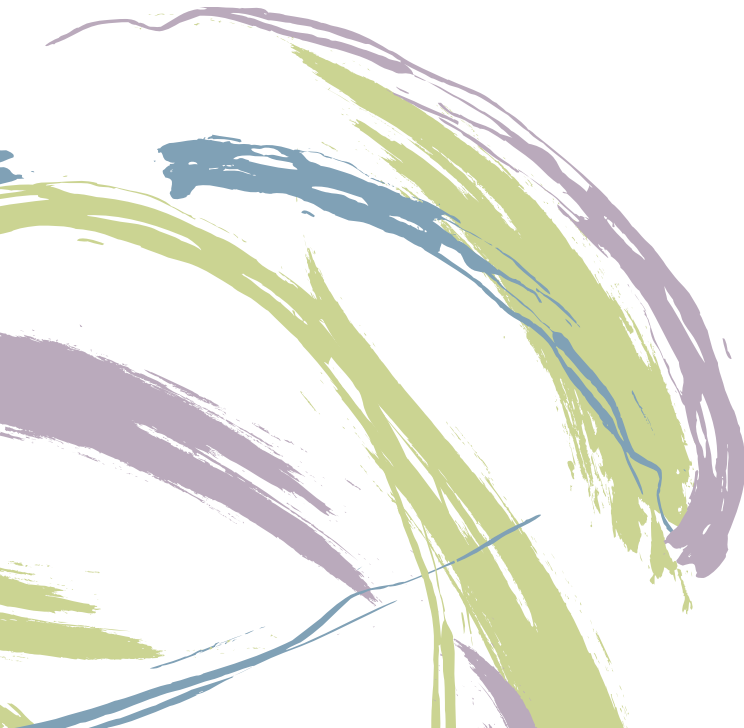
**Date:** Thursday, March 19th

**Time:** 6:00 pm - 7:00 pm

**Location:** Virtual Zoom Meeting

**Colorado Approved:** 1 hour/PDIS/TP/CDA/Supporting Children's Physical and Intellectual Development

**Stipend:** \$25



## FCC

### Feedback and Challenging Conversations

Communication is one of the core leadership functions that is cited as the primary cause of ineffective leadership. This session will provide an overview of effective communication attributes and strategies, with an emphasis on feedback and challenging conversations. This includes how to provide feedback to employees when they are missing the mark as well and up to termination conversations.

**Who Should Attend:** Classroom Teachers/Administrators

**Instructor:** Dora Esparza, Denver Early Childhood Council

**Date:** Tuesday, September 9th

**Time:** 6:00 pm - 8:00 pm

**Location:** Virtual Zoom Meeting

**Colorado Approved:** 2 hours/PDIS/PP/CDA/Managing a Commitment to Professionalism

**Stipend:** \$50

## SMEH

### Supporting Mindful Eating Habits in Young Children: A Sensory-Based Perspective

Eating and mealtimes provide many opportunities for young children to learn to read their body's signals and develop lifelong healthy eating habits. Join two Summit County occupational therapists to learn how you can support the sensory and social-emotional needs of children during mealtime. We will discuss strategies to build children's interoceptive awareness (reading the body's internal cues like hunger, thirst, etc.) to support mindful eating skills and increased emotional regulation during mealtime. Step away with tools to support picky-eaters and learn when to seek support from an OT.

**Who Should Attend:** Classroom Teachers/Administrators/Home Providers

**Instructor:** Elise Pagel, OTR/L and Erin Stark, OTR/L

**Date:** Thursday, February 5th

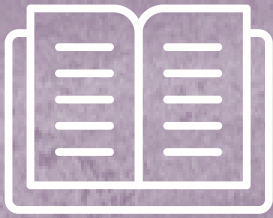
**Time:** 6:00 pm - 7:30 pm

**Location:** Virtual Zoom Meeting

**Colorado Approved:** 1.5 hours/PDIS/TP/CDA/Planning a Safe and Healthy Learning Environment

**Stipend:** \$37.50





# THINK TANK

## IN DEPTH LEARNING OPPORTUNITIES

These opportunities are designed to give professionals time to dive deeply into topics and develop relationships with colleagues.

**EQIT**

### Expanding Quality for Infants and Toddlers

The Expanding Quality in Infant Toddler Care (EQ) Initiative works with the Early Childhood Councils, Infant and Toddler Specialists and Expanding Quality in Infant Toddler Care (EQIT) trainers to work toward its primary goal of increasing the quality and availability of responsive care for infants and toddlers throughout Colorado by:

- Strengthening the skills and knowledge base of Early Childhood professionals working with infants and toddlers
- Building capacity and promoting systemic change to foster increased quality and availability of care and services
- Supporting leadership and collaboration at the community level
- Facilitating professional development for infant and toddler professionals, particularly those who are teaching or coaching infant and toddler teachers

**Who Should Attend:** Infant/Toddler Teachers/Home Providers

**Instructor:** J, Kelly Esch, and third trainer TBD

**Dates:** TBD

**Time:** TBD

**Location:** Virtual Zoom Meeting

**Colorado Approved:** 48 hours/PDIS/CGDD/CDA/Understanding the Principles of Child Development & Learning

**\*\*Participants can only miss up to two classes and makeup work is required.**

**\*\*Participants must go to PDIS to Register for EQIT.**

-Log into PDIS and do a "Learning Search." Type in Expanding Quality in Infant Toddler Care (48-hour EQIT Curriculum) and select that once it pops up.

-Scroll down find the Garfield/Mesa County sessions. Summit County teachers will be given priority for these sessions. Select view details and then register. THE REGISTRATION FEE SHOULD BE IGNORED! IT WILL BE WAVED!

**\*\*If it would work better for someone's schedule to take EQIT in the fall, look on PDIS for virtual classes offered by other counties. Participants in that specific county are given priority but if there are still spots available they can accommodate people from other counties.**

# THINK TANK OPPORTUNITIES CONTINUED

## P

### PYRAMID

The Pyramid Approach is a collaborative professional development system that fosters and sustains evidenced-based practices to support the social-emotional development and inclusion of children. The Pyramid Approach builds upon a tiered public health approach to providing universal support to all children to promote wellness, targeted services to those who need more support, and intensive services to those who need them. Pyramid Approach is a framework in which each center can utilize in conjunction with their curriculum. This offering utilizes the revised Pyramid Infant/Toddler, Preschool modules.

*Per Healthy Child Care Colorado, the following parameters will be followed:*

*Participants must attend and actively participate in all 50-hours of training to successfully complete the training and receive the Training of Special Recognition badge in the Professional Development Information System (PDIS). For virtual training, participants' cameras must be turned on. It is required that all participants attend the first Module, "Getting Started". If a participant misses the first Module, their participation in the training is immediately forfeited and they will have to re-register for a new training. If a participant misses 15-minutes or more of any Module, it is considered an absence, and the participant must make-up the Module in its entirety. No more than three (3) Modules can be missed and made-up. Make up modules will cost the participant \$15.00/module.*

**Who Should Attend:** Teachers /Administrators/Home Providers

**Instructor:** Kim Theller

**Dates:** Mondays; January 5th, 12th, 26rd; February 2nd, 9th, 16th, 23rd; March 2nd

**Time:** 8:00 am - 4:00 pm

**Location:** Virtual Zoom Meeting

**Colorado Approved:** 50 hours/PDIS/SEHD/CDA/Supporting Children's Social/Emotional Development





# TRAINING CALENDAR

The training calendar lists each professional development opportunity each day for the months of September 2024 through July of 2025. Administrative opportunities, workshops, and professional learning communities are listed.

Please note weekends and holidays are marked out in GREY and BLACK, respectively. The GOLD Strategies checkpoints are indicated in **GOLD** and marked when the observation periods begin and end. For example, on August 15, the fall checkpoint period begins (FB). On October 18, the fall checkpoint ends (FE). You will see these marked for the fall, winter, and spring checkpoints.



REMINDER FOR TEACHERS: Attend at least one RS/SPK Think Tank Series, Edvantage Training Series, or attend two or more RS/ SPK sponsored Level Up Workshops



Edvantage Trainings dive deeper into the content, so several sessions are scheduled and are indicated in **GREEN**.

Level Up Workshops are generally one session trainings and are indicated in **PURPLE**.

Think Tank sessions are indicated in **BLUE**.



Sign Up at:  
[earlychildhoodoptions.org](https://earlychildhoodoptions.org)



**Register for the  
training sessions  
using the QR  
Code**

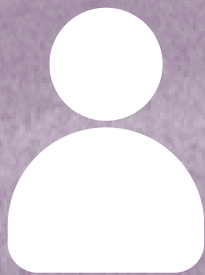


# 2025-2026 Training Calendar

	1	2	3	4	5	6	7	8	9	10	11	12	13	14
August														
September			DM						FCC	ECM				
October							TRCSP							
November												ECM		
December		CSRT		DM							FPIT			
January					P							P		ECM
February		P			SMEH	WE			P		ELOF			
March		P			DM						ECM	ECEPT		
April							IDAIP	MCSN						
May	SPE						STB						ECM	
June				DM										
July								ECM						

15	16	17	18	19	20	21	22	23	24	25	26	27	28	29	30	31
FB																
		HSO							AS							
CCFC	ASQ						CCE		FE			WB		HFM		
				DLL												
			ECM													
DCF											P			RRBC		
	P	OESL						P								
			ECC	ITIRT							AS					
				CCBTIP												
			ECM													





# CONTACT US

**For More Information on Who Might Address Your Concerns**

READ MORE



The Early Childhood Options staff, consultants and contractors are committed to supporting you.

Contact us with questions, concerns, and ideas. We value your suggestions.

## CATHERINE SCHAAF

Executive Director

catherine@earlychildhoodoptions.org

970.406.3067

## KIMBERLY THELLER

Operations Director

kim@earlychildhoodoptions.org

970.406.3074

## Programs

### JESSEE BLUMENTRITT

Quality Improvement Manager

jessee@earlychildhoodoptions.org

970.406.3064

### ALISON EARNEST

Early Childhood Business Strategy  
and Professional Growth Advisor

aearnest@earlychildhoodoptions.org

970.406.3066

### JACQUI BLACK

Early Childhood Mental Health Consultant

ECMHC@earlychildhoodoptions.org

970-205-9351

### LAURA CRONIN

Early Childhood Business Strategy  
and Professional Growth Advisor

laura@earlychildhoodoptions.org

970.406.3066

### MICHELLE MAHONEY

Tuition Assistance Manager

michelle@earlychildhoodoptions.org

970.406.3060

## Head Start 0-5

### JACQUELINE LUJAN

Head Start Program Manager

jacqueline@earlychildhoodoptions.org

970.406.3068

### ANA MENDIOLA

Family Engagement Specialist

Ana@earlychildhoodoptions.org

970.406.3061

### DAMARYS PERALTA

Data and Evaluation Coordinator

Damarys@earlychildhoodoptions.org

970.406.3070

### DULCE HERNANDEZ

Eligibility & Enrollment Services Coordinator

dulce@earlychildhoodoptions.org

970.406.3063

### ADRIANA SALCIDO

Family Engagement Specialist

Adriana@earlychildhoodoptions.org

970.406.3062



Sign Up at:  
[earlychildhoodoptions.org](https://earlychildhoodoptions.org)