

In Summit County, when you have a concern about a child's development...STEP #1

**COMMUNITY SCREENING & CHILD FIND
PROCESS IN SUMMIT COUNTY, COLORADO**

***If a family does
have concerns
about a child's
development,
encourage,
them to speak
to their doctor!***

COMMUNITY SCREENING

If there are general concerns about the development of a child 0-6 years old, parents can attend a local community screening. Community screenings are held 2-3 times per year.



Families or agencies contact Summit School District at 970-368-1000 to set up an appointment for a community screening (this includes dental, vision, & hearing).

Parent's permission is required for the screening. If an ASQ/ASQ-SE has been completed prior to the community screening, ask the parent to bring.

OR

EVALUATION/ASSESSMENT

If a parent cannot attend a community screening, has specific concerns about the development of their child, and/or an ASQ/ASQ-SE has already been completed, they do not have to attend or wait for a community screening.

Parents should contact one of the following:

SUMMIT SCHOOL DISTRICT CHILD FIND

Concerns about a child age 3-21 please call the Summit School District Child Find Coordinator at 970-368-1022.

EARLY INTERVENTION

Concerns about a child 0-3rd birthday please Call Early Intervention at 970-668-9713.

OR

If at the community screening no qualifying concerns are identified, **see the backside of this page.**

If at the community screening a significant concern is identified, the Child Find process may begin with parent permission.

A multidisciplinary evaluation/assessment conducted by qualified personnel occurs within federal timelines.

Screenings and evaluations are conducted year round at no cost to the parent. Parents can request a multidisciplinary evaluation at any time during the process.

OR

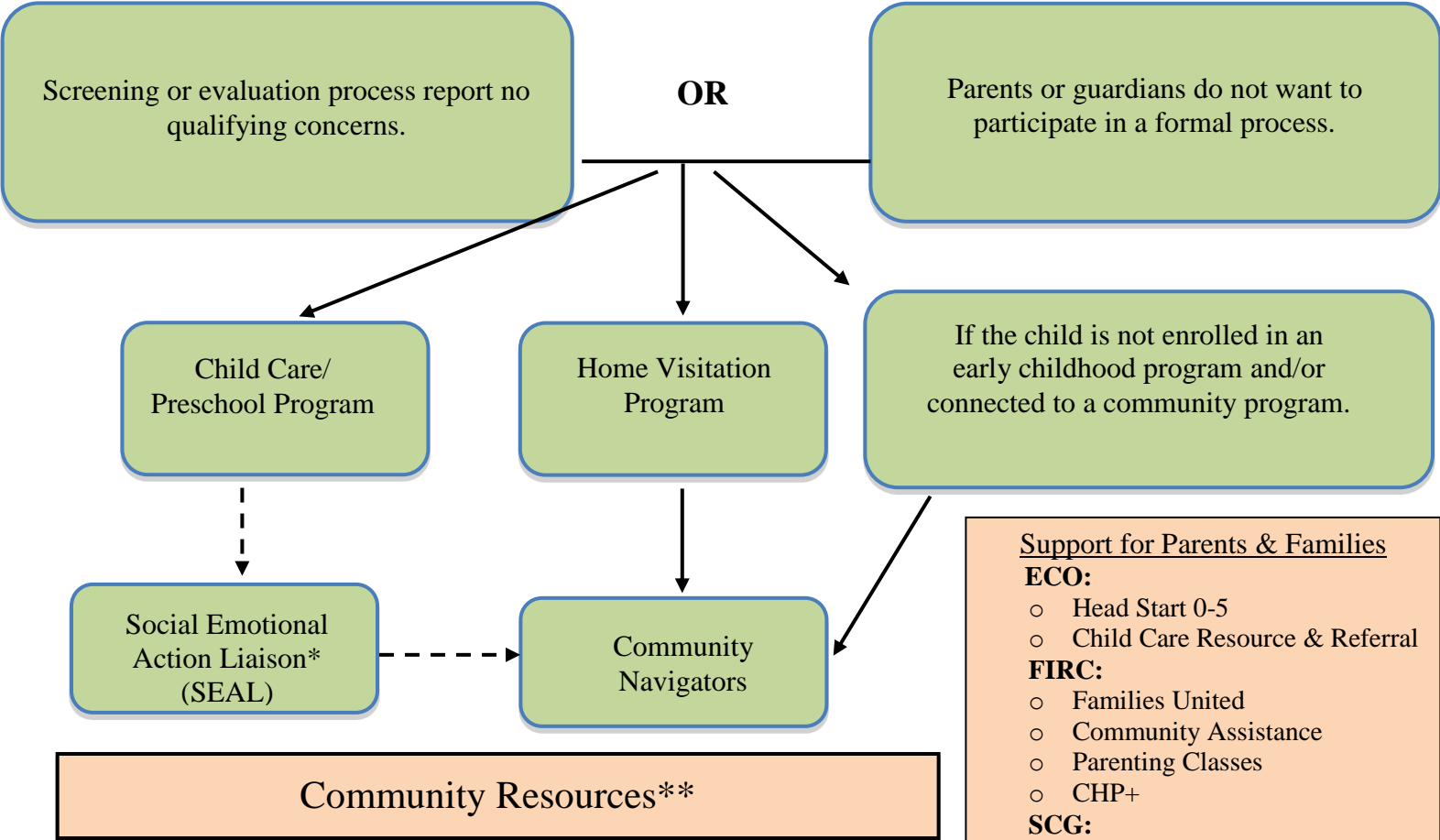
Evaluation results qualify a child for services:
*0-3 years of age for Part C
Early Intervention Colorado (EIC)
Individual Family Service plan (IFSP)

*3-6 years of age for Part B
Summit School District Preschool Programs
Individualized Education Plan (IEP)
Parents must provide permission for services.

Evaluation results do not qualify a child for special services. The team may provide the family with strategies and community resources. **See the backside of this page.**

In Summit County, when you have a concern about a child's development...STEP #2

When a parent, professional, or an early learning program is concerned about a child's development and/or behaviors, but Part B or Part C is not an option—
What can you do?



- Support for Parents & Families**
- ECO:**
- Head Start 0-5
 - Child Care Resource & Referral
- FIRC:**
- Families United
 - Community Assistance
 - Parenting Classes
 - CHP+
- SCG:**
- Community Infant Child Program (CICP)
 - Nurse Family Partnership
 - Early Intervention
 - Women Infants Children (WIC)
 - Colorado Child Care Assistance Program (CCCAP)
 - Summitsource.org
- Community:**
- Mind Springs
 - Local Therapists/Physicians
 - Care Clinic
 - Families of Exceptional Learners Support Group
 - Breckenridge Scholarship Prg.

- Support for an Early Childhood Program**
- ECO:**
- Pyramid Coaches
 - Early Childhood Mental Health Consultant
 - SEAL Program
- SCG:**
- Nurse Consultant
 - Early Intervention
 - Summitsource.org
- Community:**
- College Courses
 - Trainings & Conferences
 - Local Therapists

- Support for the Child**
- ECO:**
- Early/Head Start
 - Early Childhood Programs
- SCG:**
- Summit Social Services
 - Mountain Mentors
- Community:**
- Local Therapists/Physicians
 - Colorado Preschool Program
 - Early Intervention
 - Summitsource.org
 - Mind Springs
 - Care Clinic
 - Summit Youth Services

4/2/2015

*The Social Emotional Action Liaison (SEAL) program began in winter of 2013. Not all child care programs in Summit County have a SEAL. **Not a complete list of community resources.